

iQpump[®] Controller 5 thru 500 Horsepower

The iQpump[®] controller was designed with the pump service operators and pump system owners in mind. iQpump[®] offers ease of setup and comprehensive pump and motor protection features. The integrated pump specific software and setup parameters, allow the operator to setup specific control values for a wide range of applications. The iQpump[®] controller will automatically adjust pump operating conditions, as the process variables change while still maintaining optimum pump performance and protection. iQpump[®] can also replace phase converters when converting from a single phase to a three phase pump motor.

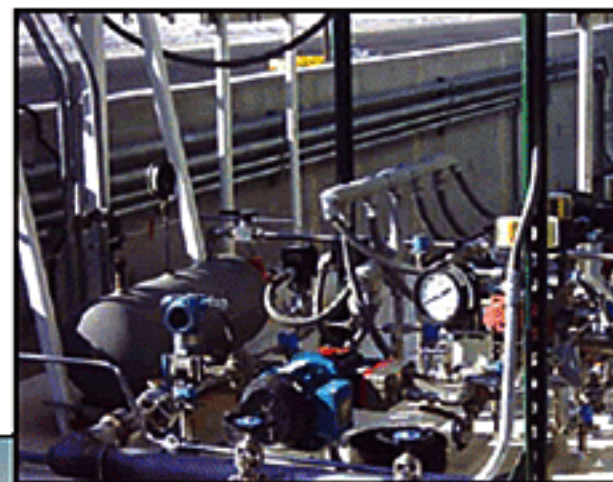
[Concept](#) | [Benefits](#) | [Software Features](#) | [SCADA Software](#) | [Applications](#) | [Options](#)

[Product Details](#)

Typical Applications

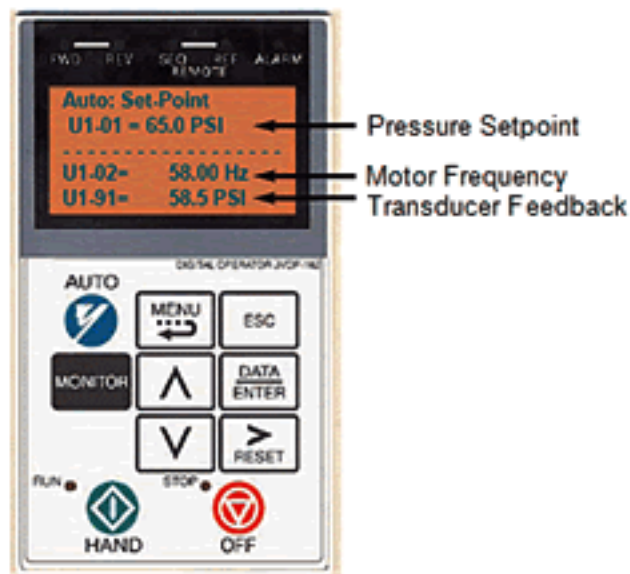


Sludge Pumps
Settling Ponds
Metering Pumps
Fluid Storage Tanks
Booster Pump Systems
Submersible Deep Wells
Commercial & Residential Irrigation



Benefits

- **Improved Process Control...** by matching pump output flow or pressure directly to the process requirements, small variations in the process can be corrected more rapidly.
- **Improved System Reliability...** any reduction in speed achieved major benefits in reducing pump wear, particularly in bearings and seals.
- **Reduce Total System Cost...** system costs are lowered by eliminating sensors, jockey pumps, restriction valves as well as reducing cable and tank sizing.
- **Energy Savings...** savings of 20 to 50% can be achieved, depending on application, by adjusting pump speed to match a lower flow/pressure, iQpump® will reduce the demand for energy.
- **Pump Specific Operator Keypad...** onboard LCD English read out reduces field start up and trouble shooting time, with intuitive pump related terminology. Programmable pump process set points are adjusted using "True Engineering Units" (PSI, GPM , Flow, etc.) The iQpump® provides real time alarms, status and operating conditions in easy to read format.
- **Ease of Installation and Setup...** iQpump® uses pump terminology on all setup parameters and monitors. Also included is a "Pump Quick Setup" menu.
- **Eliminate Complex Control Panels...** many of the electro mechanical controls can be eliminated, reducing the maintenance that these panels require.
- **Reduce Mechanical Stress and Damage...** soft-start and soft-stop capabilities eliminates pressure surges and water hammer.
- **Cooler Running Pump Motor...** soft start eliminates inrush current, dramatically increasing winding insulation life.



Typical Operator Keypad Messages

iQpump Controller

The Intelligent Pump Controller

The iQpump® controller, which is manufactured in the USA by Yaskawa Electric America, Inc., is designed to reduce the cost and size of pumping systems, while increasing the reliability. This new controller consists of a variable frequency drive (VFD) with application-specific software that can control the speed of one or more pump motors



Options



Configured Packages

(Built to UL508A Standards)

- NEMA 1 (UL Type 1)
- NEMA 12 FVFF
- NEMA 3R (UL Type 3R)

Serial Communication Options

- Ethernet/IP
- DeviceNet
- Profibus DP
- Modbus Plus
- Modbus TCP/IP

Engineered Options

- Circuit Breaker
- Input Line Reactor
- Output Line Reactor
- Output dV/dt Filter
- Fused Disconnect
- VFD Bypass
- EMI/RFI Filter
- Space Heater
- Surge Arrestor
- Single Phase AC Input Filter